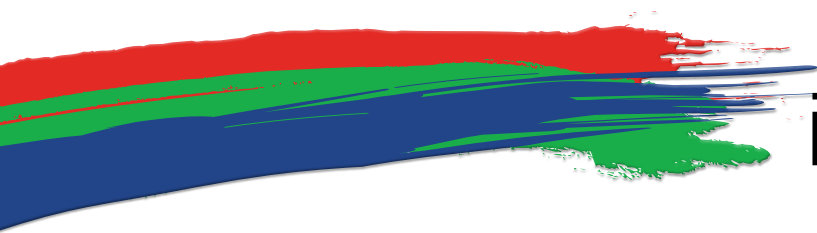




—GLP—
GERMAN LIGHT
PRODUCTS
—since 1994—



impression®
X4 XL

THE IMPRESSION X4 XL

The GLP impression X4 XL uses an incredible array of 55 RGBW LEDs, each rated at 15 watts, coupled with a highly efficient zoom range from a tight 7° to a wide coverage 50°. It produces a massive amount of light that will throw for extremely long distances.

The optical system, originally designed for the GLP impression X4, gives a sharply defined beam complete with hard edge in the lower zoom range whilst remaining absolutely homogenous and soft edged at wider angles. This is all contained within the stylish baseless design that has become synonymous with the GLP impression series. The output is a full RGBW color system with additional variable CTO control. Also featured are an electronic strobe with variable speed, smooth full range dimming and 16 bit pan and tilt.

The impression X4 XL features individually controllable LEDs allowing a range of different patterns to be created and displayed on the front lenses, including arrows, numbers, letters and much more, either from stock patterns or through user created patterns.

LIGHT SOURCE

55 Osram RGBW high power LEDs
50,000 hours life time

OPTICAL SYSTEM

Motorized zoom system with 7° to 50° beam angle
High efficiency collimator cluster for maximum light output

MOVEMENT

8 or 16 bit resolution
Position feedback
660° Pan / 260° Tilt
High precision 3 phase stepping motor control

SHUTTER / DIMMER

Continuous dimmer 0-100%
Variable speed strobe of 1-25 Hz.
Random strobe effect
Pulse effects

CONTROL

DMX-512 protocol
Macro operation of individual lenses
Very quiet temperature controlled ventilation system
Convection cooling option
Internal color presets, and variable CTO control from 2500K-10000K
Backlit graphic LCD menu
Over-temperature protection
Color calibration feature

POWER SUPPLY

Power input: Auto sensing
100-240 VAC / 50-60Hz
Power consumption:
1100 Watt max.

CONNECTORS

DMX Data: XLR 3 pin in/out
DMX Data: XLR 5 pin in/out
Mains power: Neutrik Powercon

OPERATING CONDITIONS

Maximum ambient temperature:
113°F / 45°C

MOUNTING OPTIONS

2 Omega brackets
2 attachment points for safety wires
Upright: Floor stand (supplied) with brackets for ratchet belt
Hanging (vertical): M10 socket for half coupler, or other clamp

SHIPPING

Cardboard box
2 way fourpack complete with half coupler and flight case

HOUSING COLORS

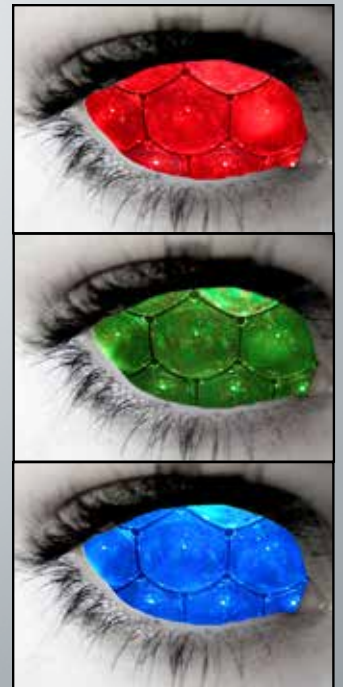
Standard colors are black, silver & white.
For other colors please contact sales department.

DIMENSIONS

Length x width x height (head vertical):
7.8 x 21.6 x 20.2 in /
200 x 550 x 515 mm

NET WEIGHT

52.91lbs / 24 kg



impression 
X4 XL



GLP German Light Products, Inc.
10945 Pendleton Street
Sun Valley, CA 91352
Tel: +1.818.767.8899 Fax: 1.818.279.9898
www.germanlightproducts.com info@germanlightproducts.com

