

Cosmic Truss' Tower System is built with F34 truss. Used to create beautiful and impressive stages and roof constructions that are both easy to assemble and safe to use.

Our patented solutions provide maximum safety and usability during assembly and disassembly. The F34 safety module for the Tower System, has a unique design that enables you to stand on the ground while securing and releasing the sleeve block.

From the ground support to the sleeve blocks and head rollers, the F34 Tower System will provide users with optimal load capacities on a larger scale.

Using all universal components and accessories from Cosmic Truss, gives you endless possibilities that can easily become reality. With the ability to combine any number of parts from the Cosmic Truss range.

Ground Support Base

F34/F44 w/ steel feet
CODE: GS-F44BS-1

2.46' Steel Outrigger

Steel
CODE: ST49216SB

4.92' Outrigger w/ crossbar

Steel
CODE: ST49214SB

Steel Ballast Base

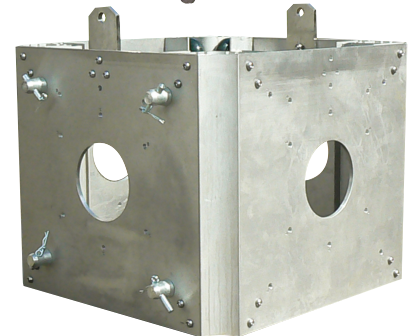
Steel
CODE: ST49217SB

F34 Tower

CODE: GS-34TN



CODE: GS-34S



Hinge elements

CODE: 5029



@cosmictruss

