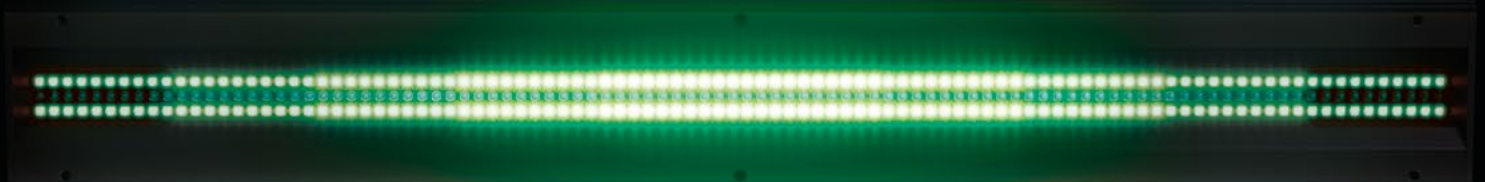
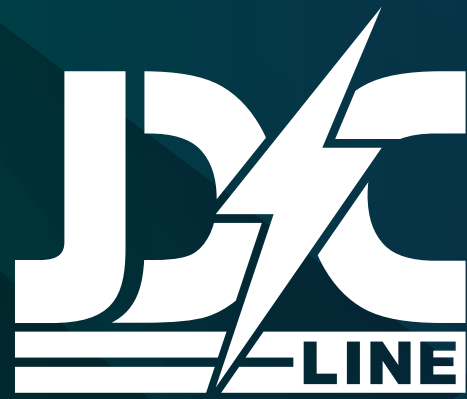




Powerful Strobe-Line
combined with amazing
RGB-Pixel-Mapping





RGB PIXEL SEGMENTS AND WHITE STROBE LINE

Super bright
with individual control



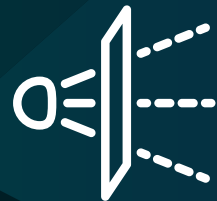
SEGMENT EFFECT ENGINE

with 50 dynamic Patterns
Controllable in Pattern Steps, XFade,
Pattern Transition, Length and Offset



CONTINUOUS ALIGNMENT

Designed for gapless installation
of multiple fixtures



OPTICAL FILTER OPTIONS

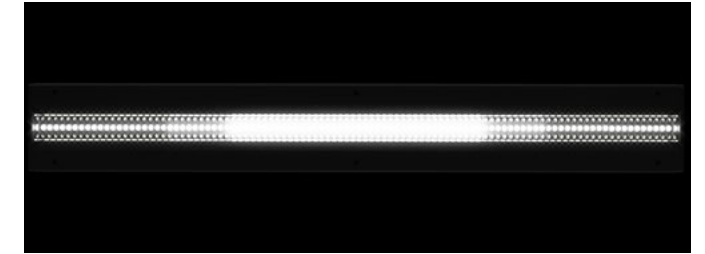
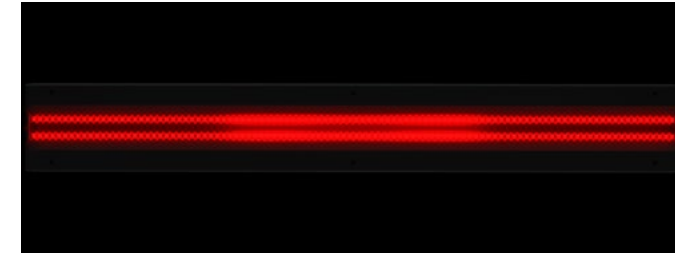
magnetic frontscreen
for modifying the output beam
to wired looking designs

POWERFUL STROBE-LINE - AMAZING RGB-PIXEL-MAPPING

The JDC Line is the new Hybrid highlight Product from GLP and combines a powerful strobe line with a never seen powerful LED pixel mapping device.

There are a lot of Pixel-Mapping/Video-Sticks in the market but they all just offer the brightness of a typical video stick and the pixelpitch always has black areas between the pixel segments. The JDC Line is completely different and offers a much brighter RGB Pixel mapping effect mixed by a special 500 mm lens tube which gives great look and new design options.

RGB PIXEL SEGMENTS AND WHITE STROBE LINE



The pixel segments of the JDC Line measures 25 mm in width. The segments are seamless next to each other, so that there are no blackout areas between the pixels. A super highlight feature: Each pixel segment can be split into upper and lower part which gives additional creative options.

The second part of the fixture is a powerful strobe tube, well known from the JDC center beam LEDs. The JDC Strobe LEDs emit into the same lens tube as the RGB Pixel Mapping LEDs and also offer a segmentation of 25 mm for stunning dynamic effects.

ONE LENS TUBE



The idea to emit the powerful strobe and the RGB Pixel mapping output through the same lens tube creates a very nice look and avoids seeing ugly separate LEDs or light reflections from white face LEDs.

FLEXIBLE RIGGING



The smart rigging accessories such as rigging bracket and alignment bracket provide a convenient handling of the product.

Using the alignment bracket, multiple devices can be easily mechanically connected together while the rigging bracket allows an installation of rigging clamps on the top, button, and back side of the product.

A clever airflow design allows the cooling of the fixture also when lying on the ground, installed between objects or on top of each other.

No responsibility taken for misprints, errors and technical changes. Technical drawings and product depictions are representative only and can vary from the original items. Technical data is subject to change without notice as a result of product modification. Subject to our general terms and conditions. © GLP

GLP German Light Products GmbH | Industriestr. 2 | 76307 Karlsbad | Register court: Mannheim | Trade register (HRB): 361719 | CEO: Udo Künzler Telephone: +49 (0)72 48 / 927 19 - 0 | Fax: +49 (0)72 48 / 927 19 - 30 | E-Mail: info@glp.de | Internet: www.glp.de

TECHNICAL DATA

LIGHT SOURCE

LED-Type	White LED (XX W) RGB LED (0,3 W)
LED Count	JDC Line 500 100x White, 200x RGB JDC Line 1000 200x White, 400x RGB
Lifetime	XXXX50,000 h
LED refresh rate	XXXX2,200 Hz, 3,000 Hz, 4,800 Hz, 9,600 Hz, 25 kHz
CCT	White LED: 5,700 K RGB LED: 6,500 K, changeable to 8,000 K

OPTICAL SYSTEM

Total Output	XXXX8,000 lm
Beam Angle	XXXX1°
Output Lens	JDC Line 500 494.15 x 22 mm / 19.45 x 0.87 in JDC Line 1000 2 lenses á 494.15 x 22 mm / 19.45 x 0.87 in

CONTROL AND PROGRAMMING

DMX Channels	JDC Line 500 M1: 14 / M2: 31 / M3: 72 / M4: 39 / M5: 91 / M6: 151 JDC Line 1000 M1: 11 / M2: 28 / M3: 132 / M4: 56 / M5: 171 / M6: 291
Control Modes	M1: RGBWStrobe M2: WStrobe, RGBStrobe M3: WStrobe, RGB Pixel M4: RGBStrobe, W Pixel M5: MultiPix M6: MultiPix Advanced
Control Protocols	DMX (USITT DMX512-A), RDM (ANSI/ESTA E1.20), Art-Net, sACN
High-Res Channels	Intensity
Dimming Curves	linear, soft
Fan Modes	regulated, high, medium, low
Setting and addressing	Control panel with Multicolor graphic display, 4 Button Menu Navigation, DMX, RDM
Others	Split-Pixel-Segments
Firmware Update	DMX Link via DProg

CONNECTORS

Power connection	Neutrik powerCON TRUE1 In / Out
Signal connection	XLR 5-Pin In/Out, etherCON In/Out (failsafe)

ELECTRICAL SPECIFICATIONS

Power input	100–240 VAC / 50–60Hz
Power supply unit	Auto-ranging electronic switch-mode
Max. Power (@230V)	JDC Line 500 700 W JDC Line 1000 1,400 W

THERMAL SPECIFICATIONS

Cooling Type	Combined convection and forced air
Max. ambient temperature	45 °C / 115 °F
Min. ambient temperature	5 °C / 40 °F

INSTALLATION

Mounting	JDC Line 500 2 pair of 1/4-turn locks, 2x Safety Cable attachment point (Handles), 1x Rigging Bracket with 2 pairs of 1/4-turn locks JDC Line 1000 4 pair of 1/4-turn locks, 4x Safety Cable attachment point (Handles), 2x Rigging Bracket with 2 pairs of 1/4-turn locks
Orientation	Any
Location	Dry location only

CONSTRUCTION

Housing Color	Black
Housing Material	High-impact flame-resistant thermoplastic, Aluminium, Steel Metal Plates
Protection Rating	IP 20
Construction Features	Handles, magnetic Front- screen, alignment bracket

DIMENSIONS & WEIGHT

JDC LINE 500

Height	74 mm / 2.9 in
Width	507 mm / 19.96 in
Depth	201.5 mm / 7.93 in
Weight (netto)	6 kg / 13.23 lbs

JDC LINE 1000

Height	74 mm / 2.9 in
Width	1007 mm / 39.65 in
Depth	201.5 mm / 7.93 in
Weight (netto)	12 kg / 26.46 lbs

