

GLP Tech Note

impression X5 (X5-19)
GLP impression X5 Mesh Update
11/08/2022



GLP's strategy is to ensure that its products remain active in the marketplace as reliably and as long as possible. In support of this strategy, we are committed to communicating technical changes or anomalies transparently with our customers. The following technical information is intended to provide general information on technical changes or anomalies. They are intended in particular for service technicians to be informed quickly and appropriately in the event of functional deviations or defects.

- [GLP iQ.Service App](#)
 - [Introduction](#)
 - [Download](#)
- [iQ.Mesh Update Process](#)



This is an important and urgent software update for the impression X5 series to bring the firmware of the iQ.Mesh module to an operationally safe status.

Please check the firmware status of the iQ.Mesh module of your GLP fixture before next use.

The firmware status of the iQ.Mesh module can be found in the Main Menu under
"INFORMATION > CONTROLLERS > iQ.MESH (10/10)"

If the firmware status is **lower than FW 5.0.26**, please follow the update process described in this manual.

If you have any questions, please do not hesitate to contact the GLP Service Team.

GLP Tech Note

impression X5 (X5-19)
GLP impression X5 Mesh Update
11/08/2022



1 GLP iQ.Service App

1.1 Introduction

The iQ.Service app offers technicians a wide range of options for particularly convenient operation, configuration and maintenance of iQ capable luminaries.

1.2 Download

Use the following QR codes to download the app from Playstore or Apple Store as usual.



i Please note that the GLP iQ.Service app is currently only available as a pre-release. This version is first to be seen as a first BETA test version and currently offers a convenient firmware update solution. Currently it is not yet possible to create user accounts or to use extended functions. In this regard, we ask for a little patience.

GLP Tech Note

impression X5 (X5-19)
GLP impression X5 Mesh Update
11/08/2022

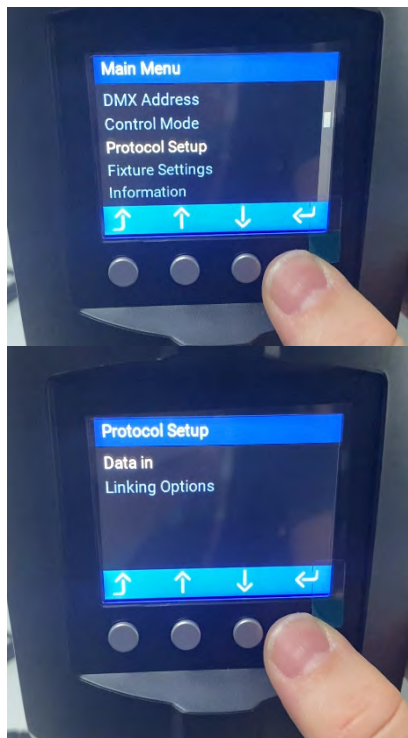


2 iQ.Mesh Update Process

- 1.) Connect one or more devices to which you want to update the iQ.Mesh module to the power supply.
- 2.) Start the GLP iQ.Service app on your mobile device. Make sure that you are within receiving range of the Fixtures iQ.Mesh Module (<10m).
- 3.) Open the main menu.



Navigate to "Protocol Setup > Data In".



Select the protocol "iQ.Mesh" and confirm the selection by pressing the "ENTER" key

GLP Tech Note

impression X5 (X5-19)
GLP impression X5 Mesh Update
11/08/2022



4.) Now pick up your mobile device with the active GLP iQ.Service app.

Select the FIXTURES page at the bottom of the app.

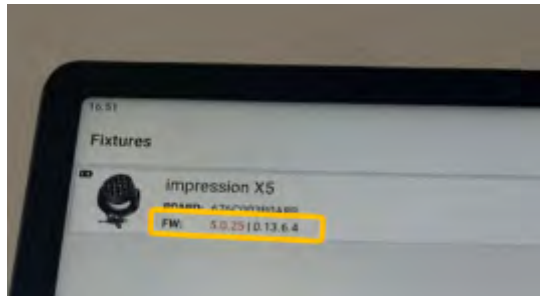
Drag your finger down the center area of the screen to trigger the update process to search for new fixtures in iQ.Mesh Mode.



After successful search process all found devices are displayed in the fixture list.

GLP Tech Note

impression X5 (X5-19)
GLP impression X5 Mesh Update
11/08/2022



Check the firmware status of the fixture:

The first number (here in the example 5.0.25) shows the currently installed iQ.Mesh module firmware version.

The second number (here in the example 0.13.6.4) shows the currently installed fixture firmware version.

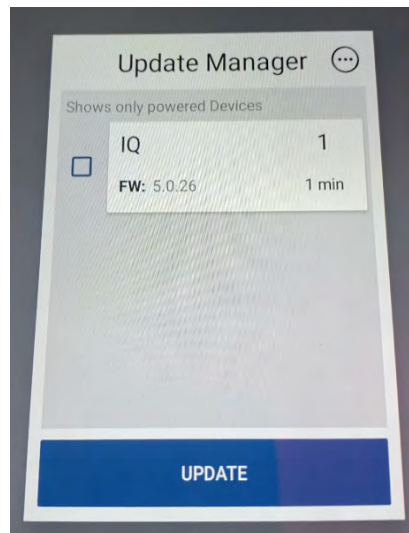
5.) Now start the update process by clicking on the UPDATE MANAGER icon in the upper right area of the app.



The UPDATE MANAGER window will pop up:

GLP Tech Note

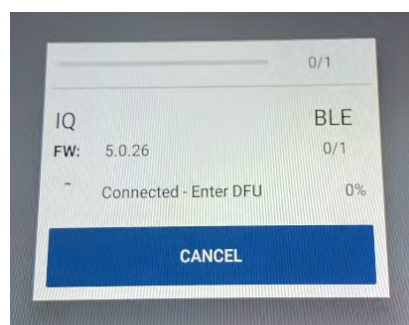
impression X5 (X5-19)
GLP impression X5 Mesh Update
11/08/2022



Select the appropriate firmware update by checking the corresponding checkbox.
In this case the iQ.Mesh firmware "FW: 5.0.26".



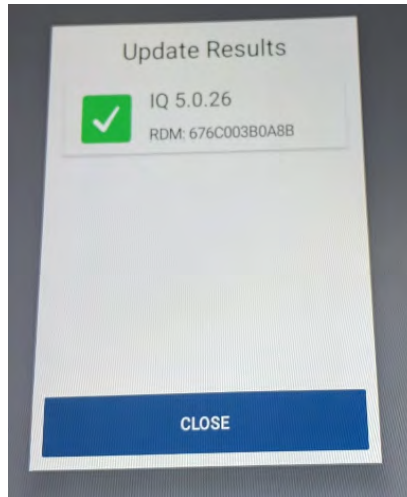
Then press UPDATE to perform the update.
Now the firmware will be updated on the iQ.Mesh Module.



5.) After a successful update, you will see a message like the following.

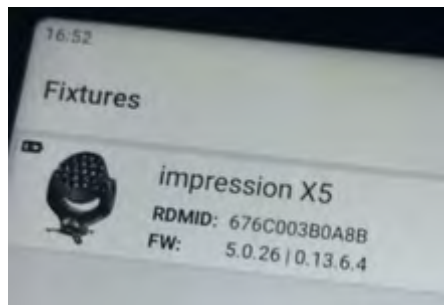
GLP Tech Note

impression X5 (X5-19)
GLP impression X5 Mesh Update
11/08/2022



Close the update window.

Refresh the list of devices on the FIXTURE page and check the firmware versions displayed there.



Congratulations

Your device is now on the latest iQ.Mesh firmware.
To update other fixtures follow the steps above.



To restore the fixture settings and configuration to its normal operating state, we recommend that you reset the fixture to factory settings after the successful update. To do this, go to the main device menu and select LOAD FACTORY DEFAULTS.