

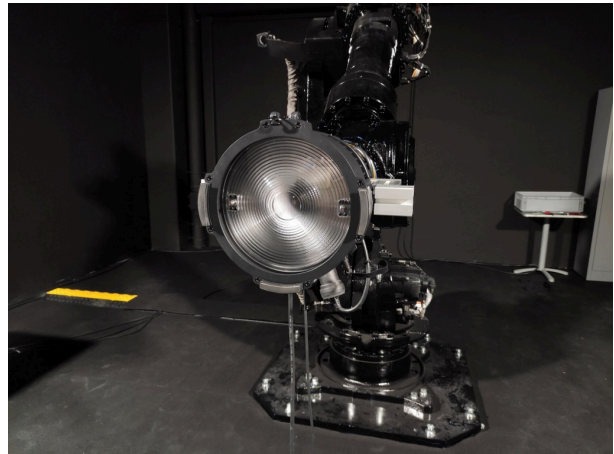


Fusion XPar 12Z Photometric Report

Report 2022-08-04-3

GLP German Light Products GmbH
GLP LightLab

CRI	88
Lamp	RGBL LED
Serial Number	23040400001
Measurement Date	2022-08-04 11:11
Software Version	2.8.0





Contents

1	White Quality – 3200K	2
1.1	TM-30-15 Detail Plots	3
1.2	TLCI-2012 Results	5
2	White Quality – 6500K	6
2.1	TM-30-15 Detail Plots	7
2.2	TLCI-2012 Results	9

1 White Quality – 3200K

Table 1: Summary for 3200K spectral measurement results and color metrics.

Metric	Value
CCT	3380 K
CCT D_{uv}	0.0019
CRI R_a	88
CRI R_g	82
TLCI-2012	80
TM-30-15 R_f	110
TM-30-15 R_g	85
CIE 1931 x	0.414
CIE 1931 y	0.399
CIE 1960 u	0.238
CIE 1960 v	0.344

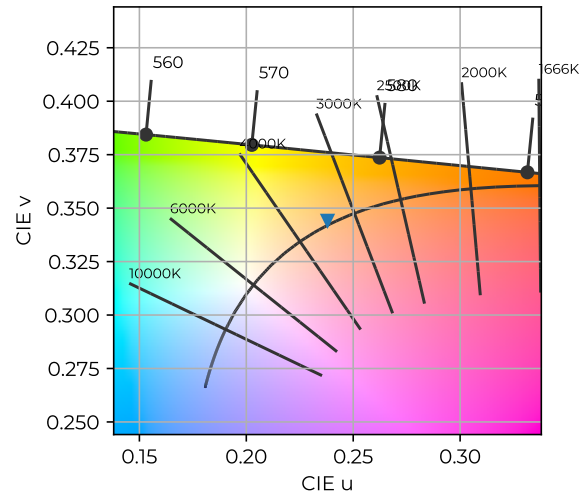


Figure 1: Color coordinates in CIE 1960 chromaticity diagram. 3200K

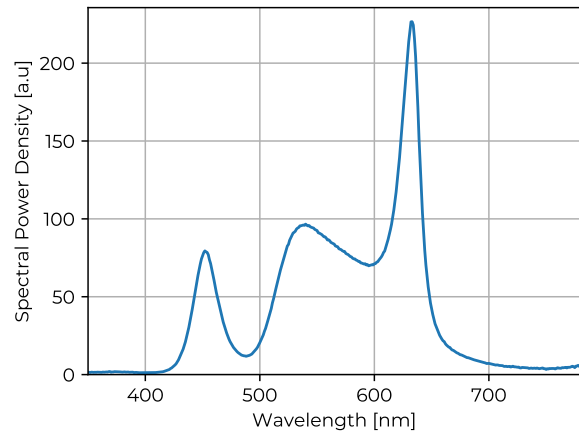
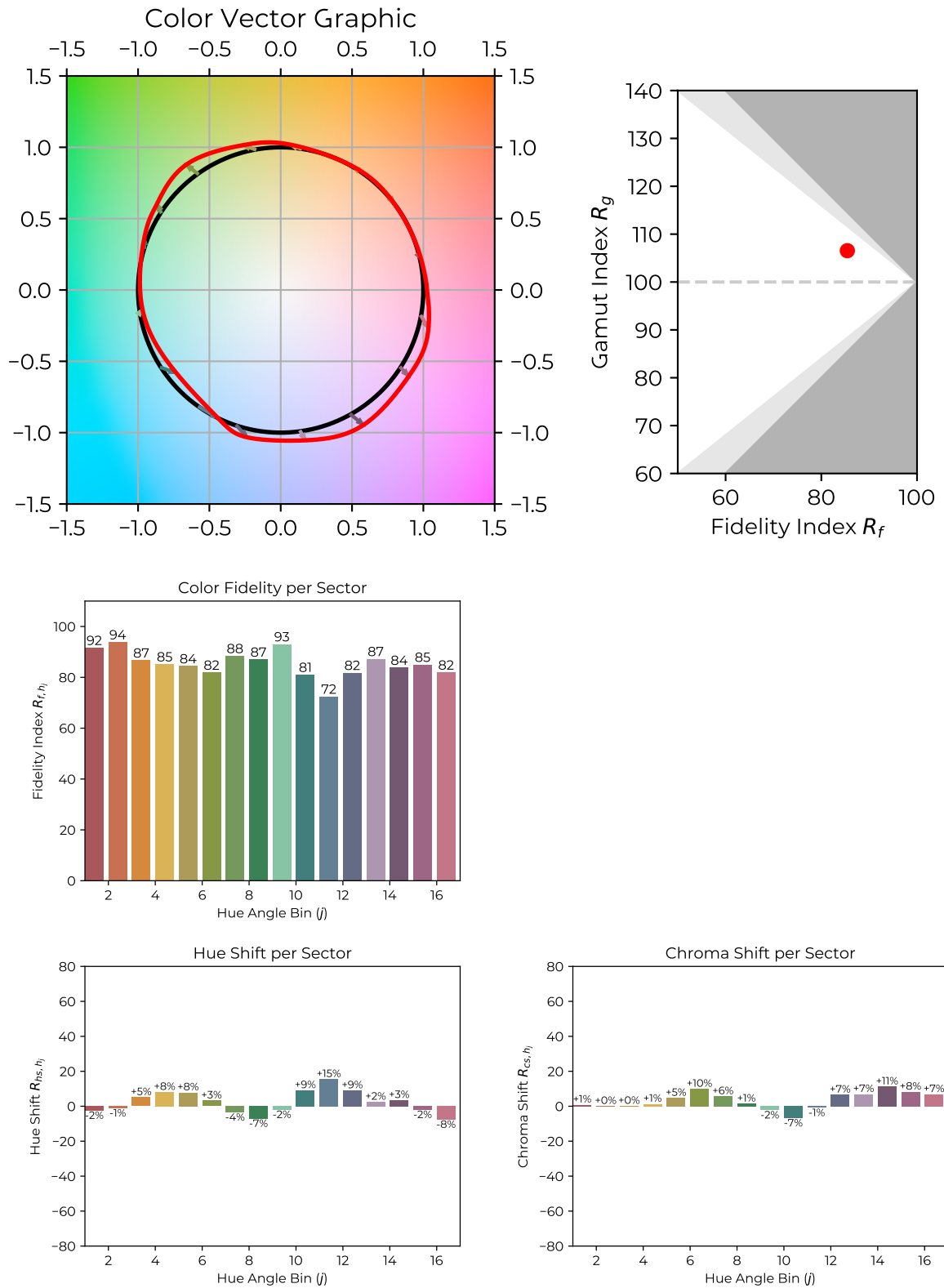
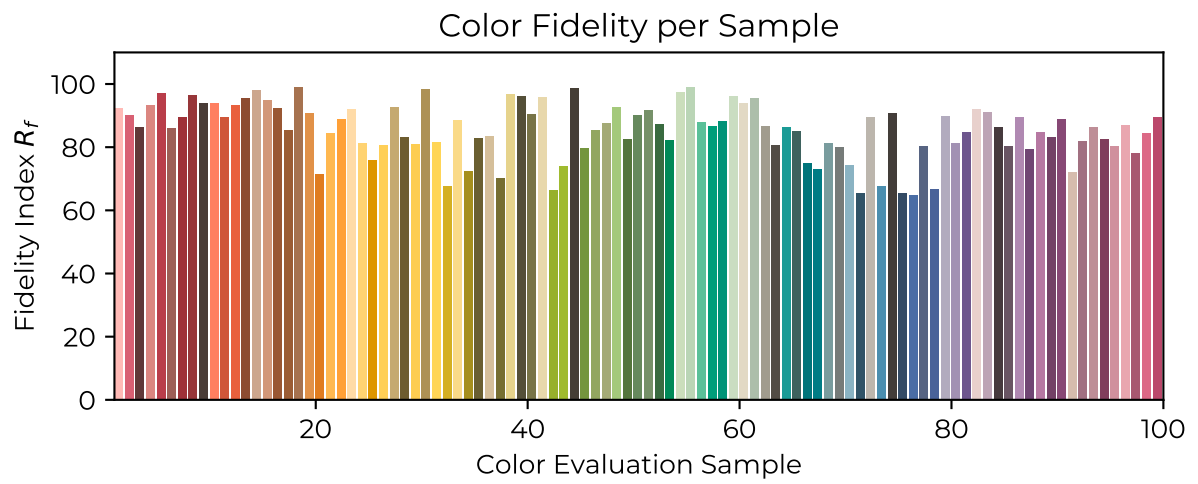


Figure 2: Measured Spectral Power Distribution of light source. 3200K

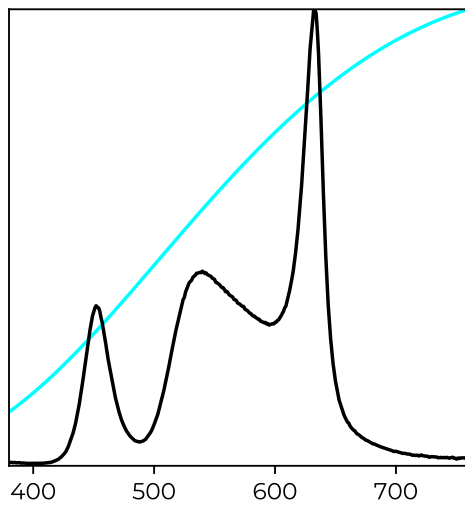
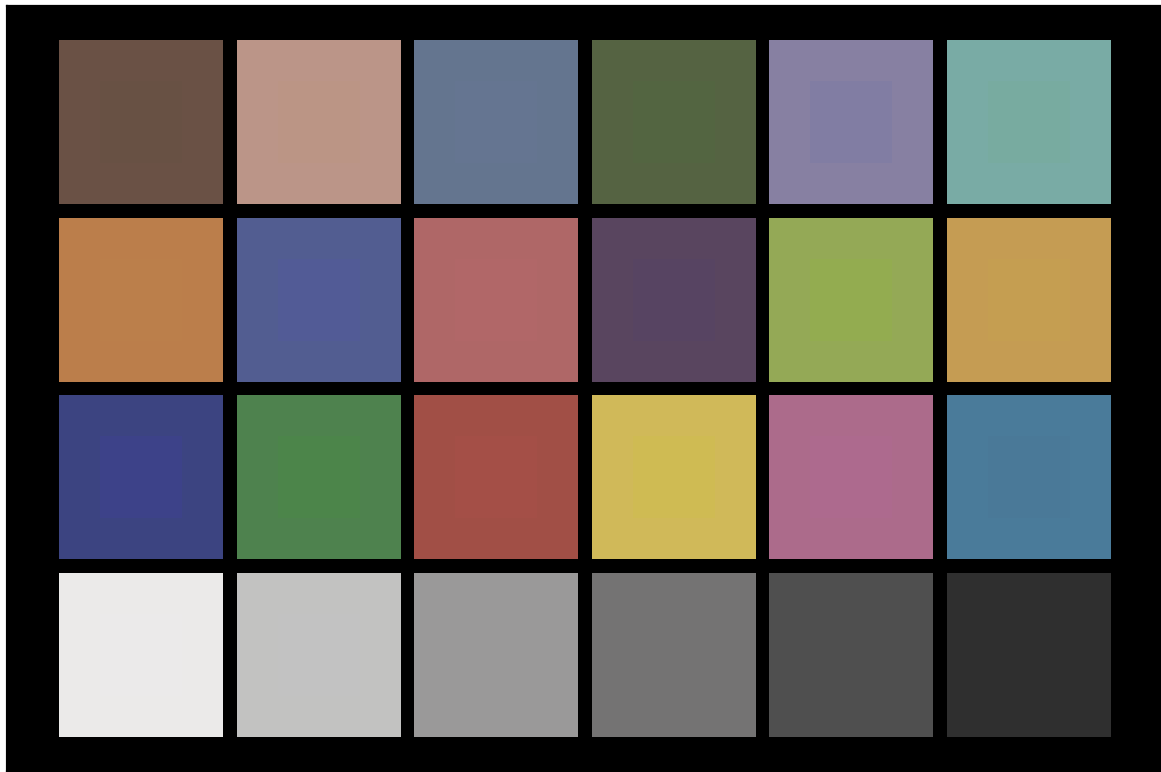
1.1 TM-30-15 Detail Plots





1.2 TLCI-2012 Results

Fusion XPar 12Z 3200K : CCT = P3372 0.34, TLCI = 80



Sector	Lightness	Chroma	Hue
R	1	1	1
R/Y	1	1	1
Y	3	3	3
Y/G	3	3	3
G	3	3	3
G/C	4	4	4
C	4	4	4
C/B	2	2	2
B	3	3	3
B/M	4	4	4
M	3	3	3
M/R	2	2	2

2 White Quality – 6500K

Table 2: Summary for 6500K spectral measurement results and color metrics.

Metric	Value
CCT	6746 K
CCT D_{uv}	0.0015
CRI R_a	87
CRI R_g	92
TLCI-2012	85
TM-30-15 R_f	100
TM-30-15 R_g	83
CIE 1931 x	0.309
CIE 1931 y	0.322
CIE 1960 u	0.198
CIE 1960 v	0.309

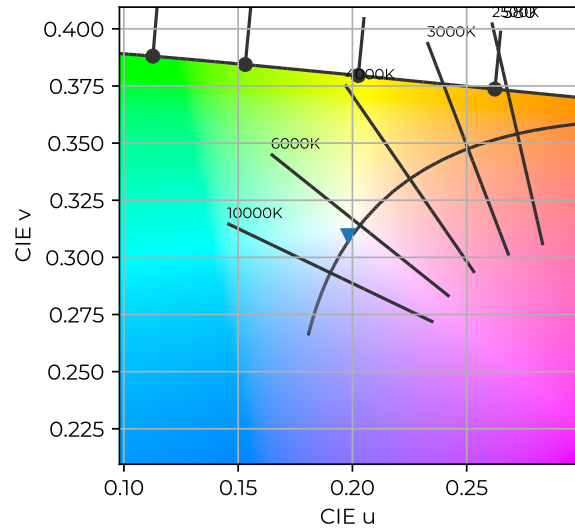


Figure 3: Color coordinates in CIE 1960 chromaticity diagram. 6500K

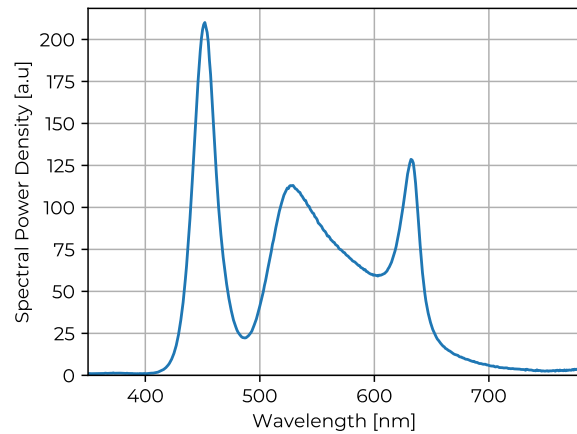
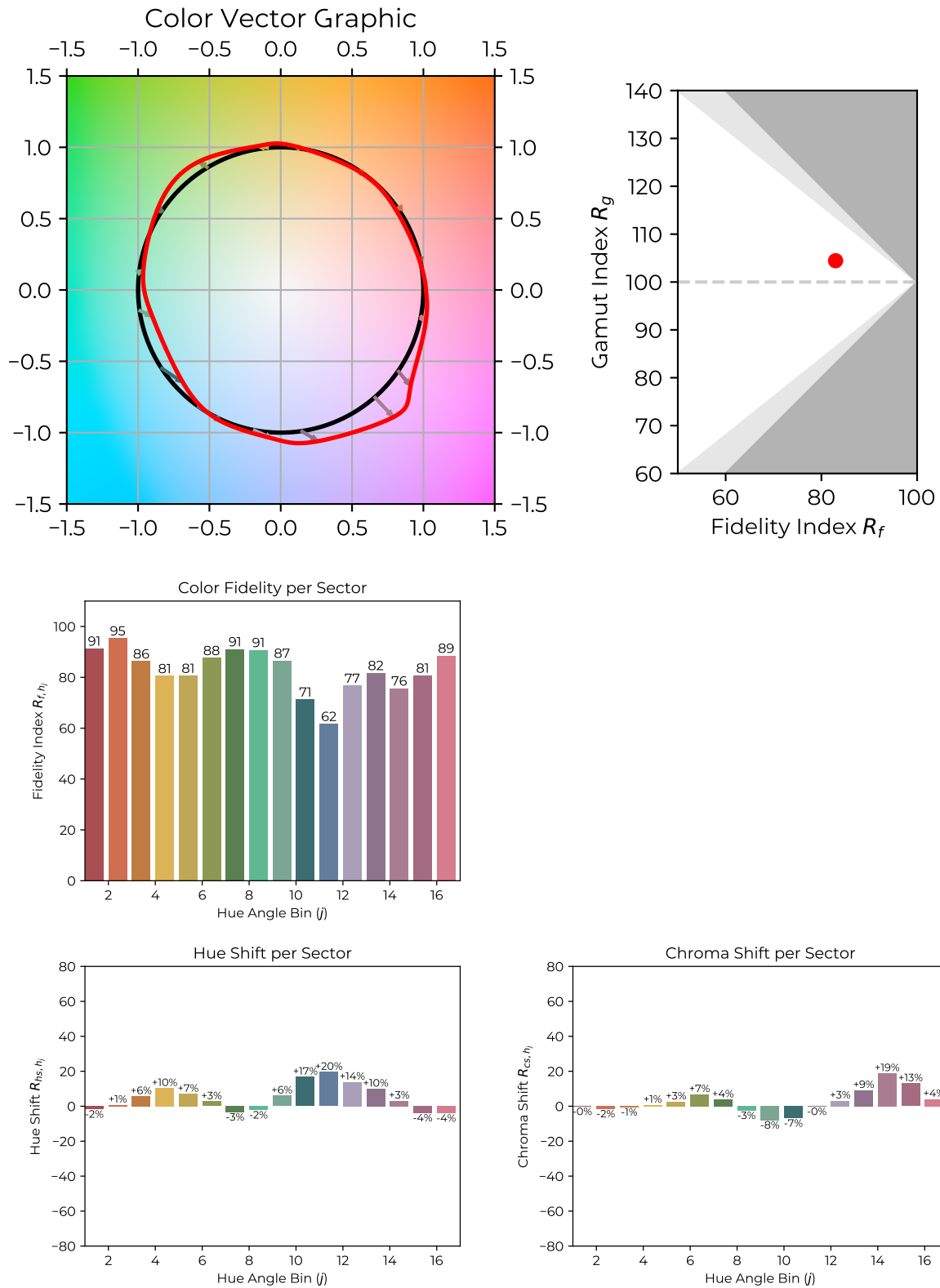
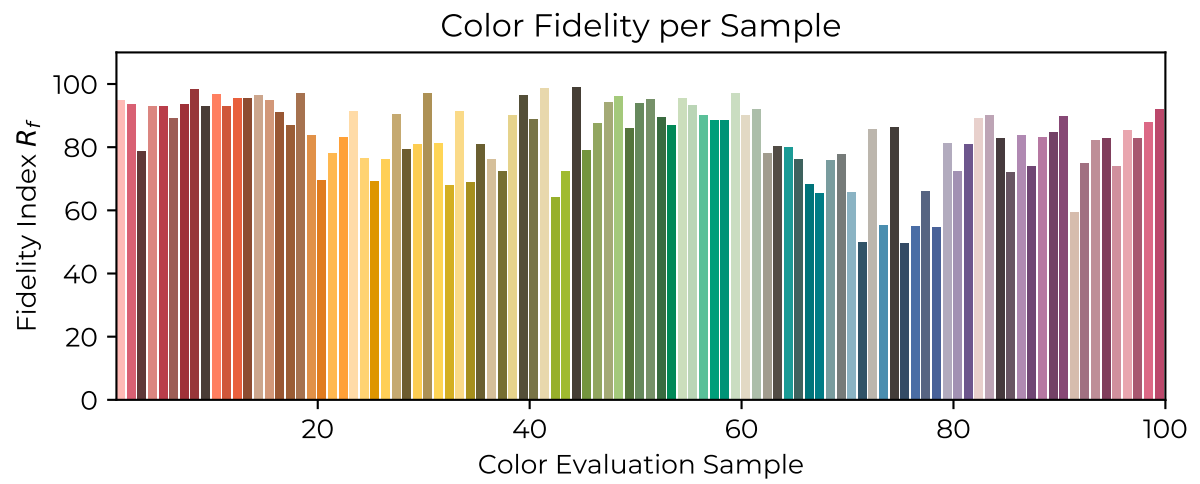


Figure 4: Measured Spectral Power Distribution of light source. 6500K

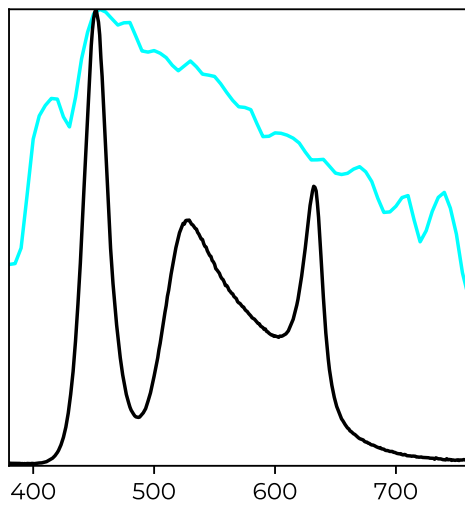
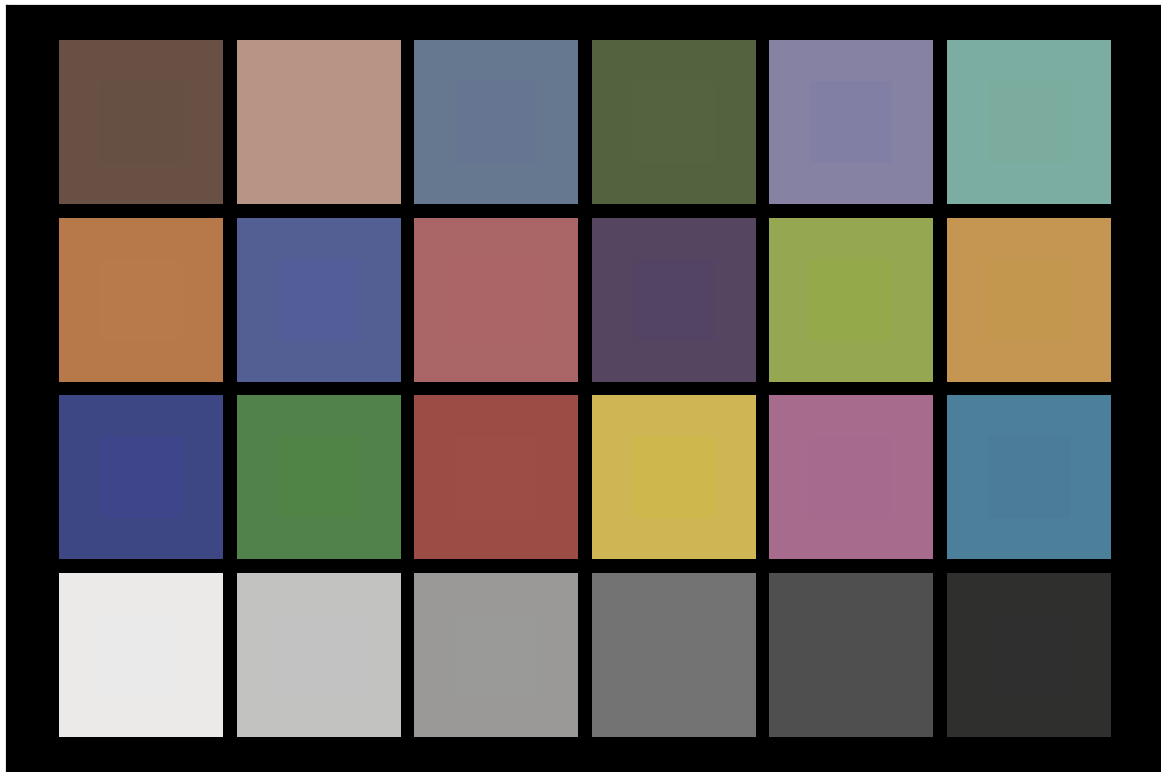
2.1 TM-30-15 Detail Plots





2.2 TLCI-2012 Results

Fusion XPar 12Z 6500K : CCT = D6752 - 0.33, TLCI = 85



Sector	Lightness	Chroma	Hue
R	0	0	0
R/Y	1	1	1
Y	3	3	3
Y/G	3	3	3
G	3	3	3
G/C	3	3	3
C	3	3	3
C/B	2	2	2
B	3	3	3
B/M	2	2	2
M	2	2	2
M/R	2	2	2